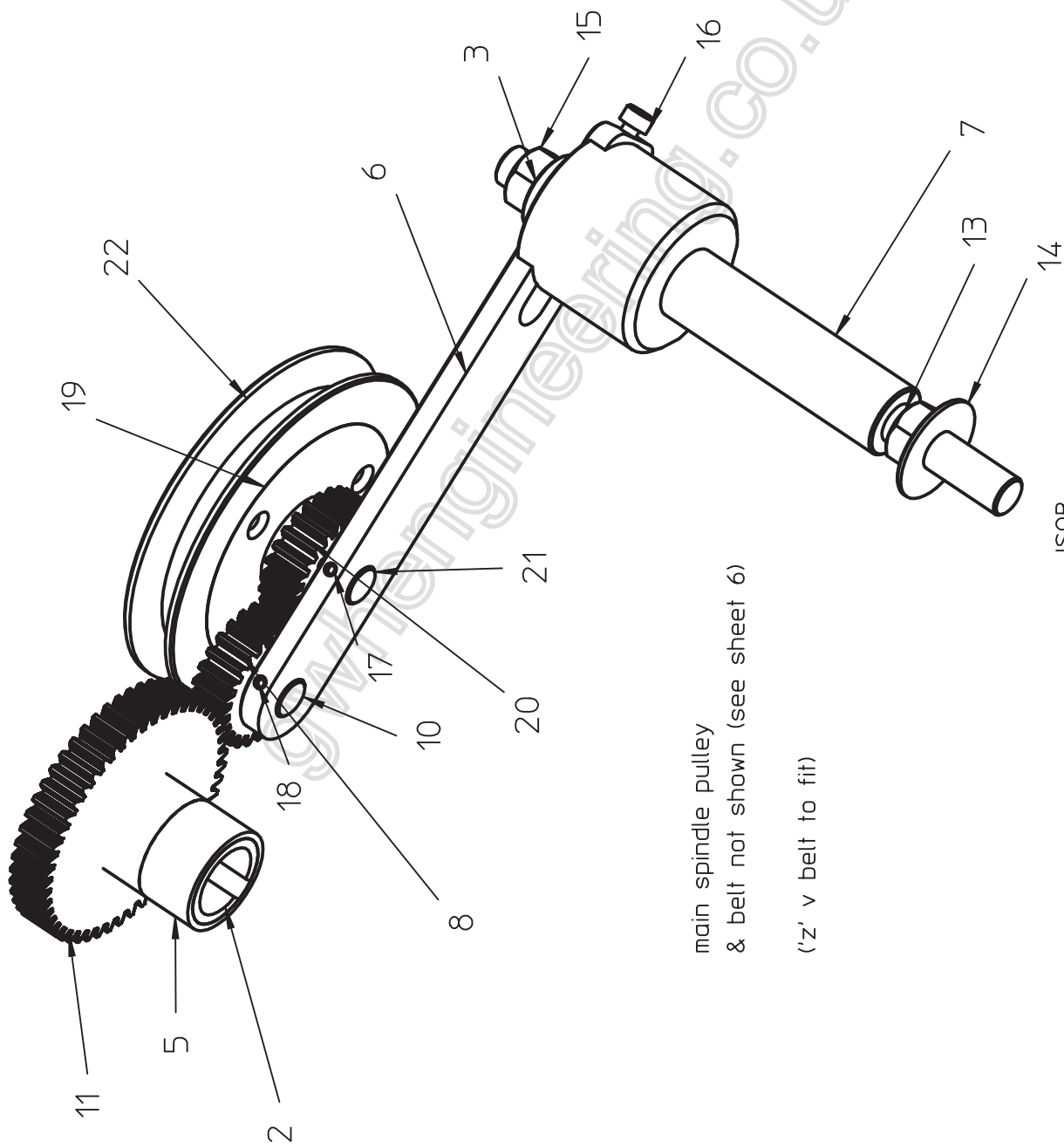


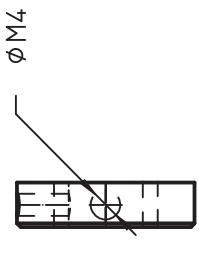
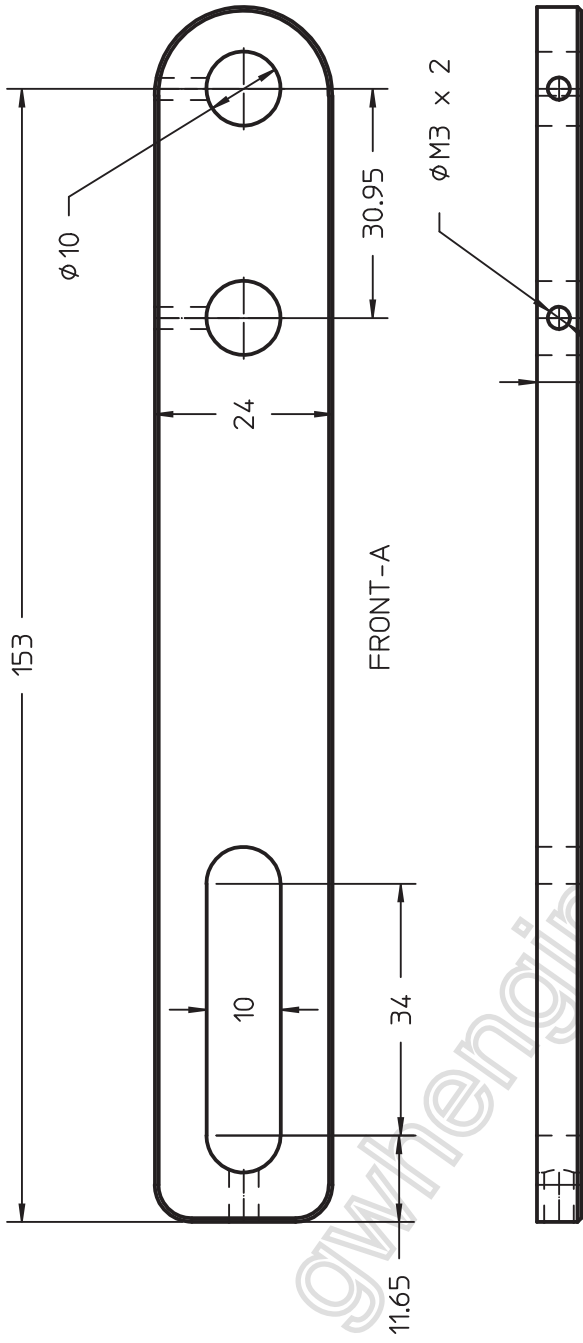
Pos	Part No.	Part Name
1		spindlepulley
2		shaft50tgear
3		washer.1
4		bush
5		collar
6		arm
7		attachstud
8		gear25.1
9		bush.1
10		gear25stud.1
11		gear50t
12		bearing
13		nuf
14		attachwasher
15		nut.1
16		settingscrew
17		grubscrew
18		grubscrew.1
19		pulleygearplate
20		gear25
21		gear25stud
22		pulley



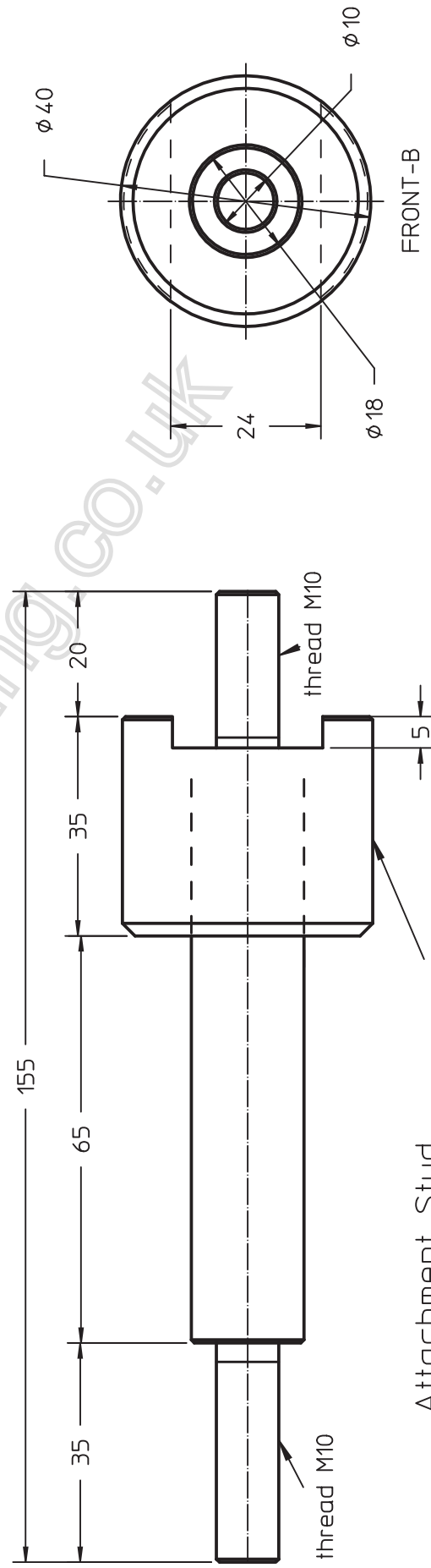
main spindle pulley
& belt not shown (see sheet 6)

('z' v belt to fit)

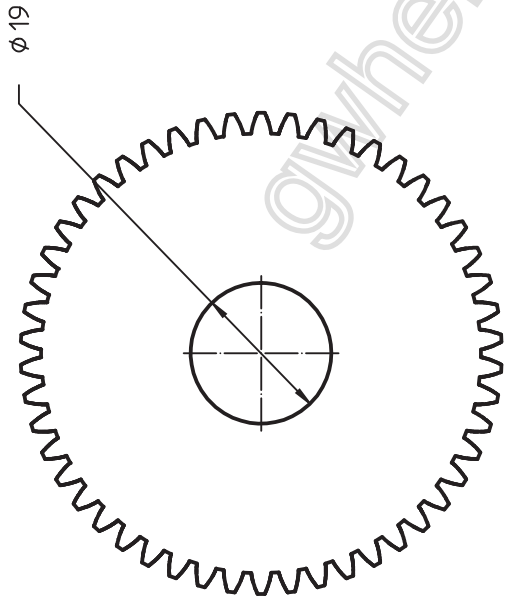
ISOB
SCALE 1:1.5



RIGHT-B



Attachment Stud
RIGHT-A

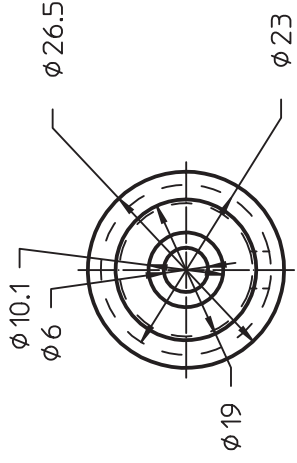


FRONT-D

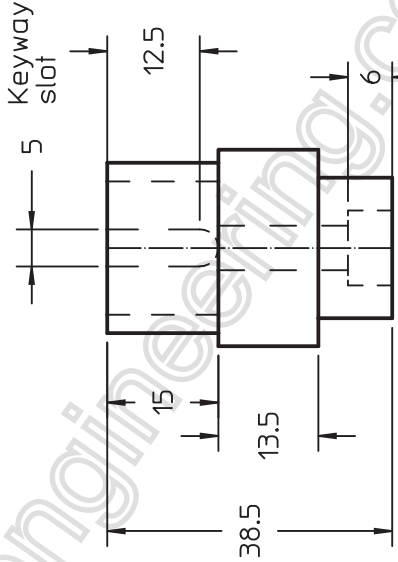


TOP-D

50t gear 20pa, 1.25mod



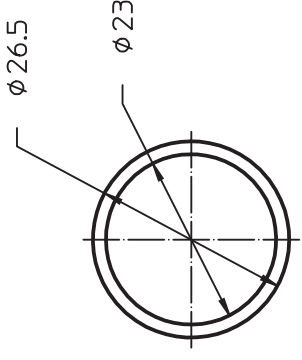
FRONT-E



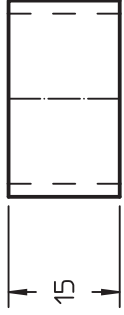
TOP-E

50t Gear Shaft

machine slot and then
 locrite collar on for
 internal keyway

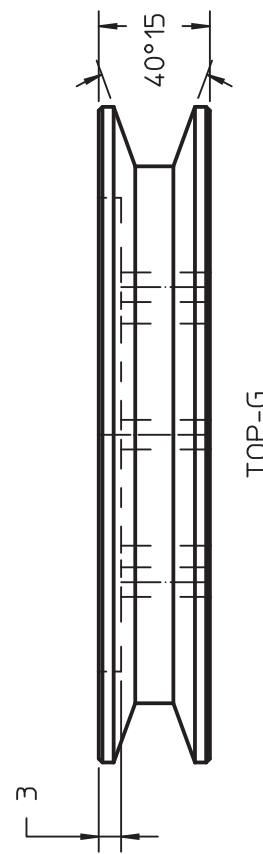
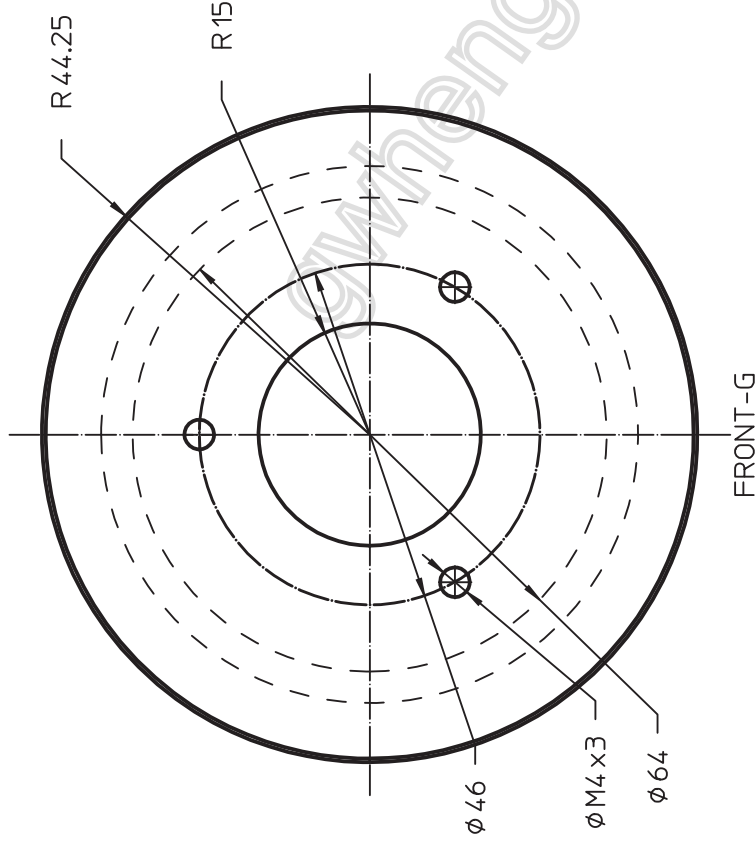


FRONT-F

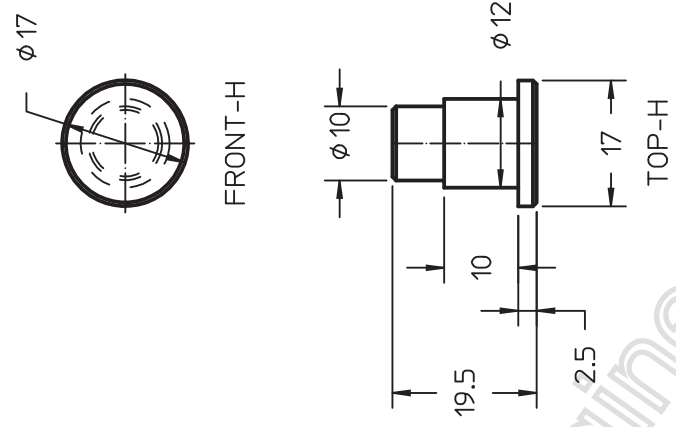


TOP-F

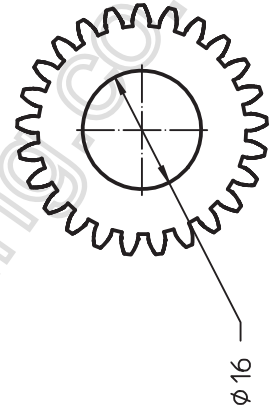
Collar



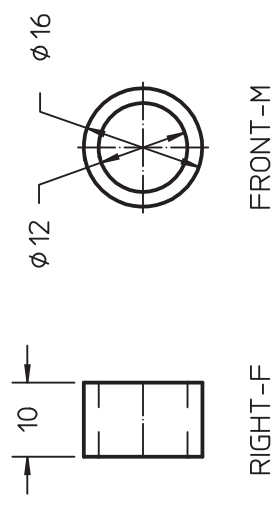
TOP-G
Pulley, al.
bore to fit ball
bearing



Gear Stud

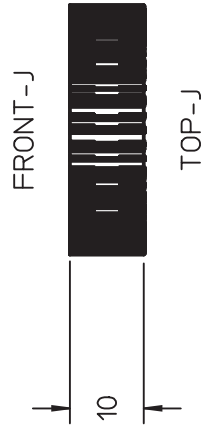


Gear Stud pulley



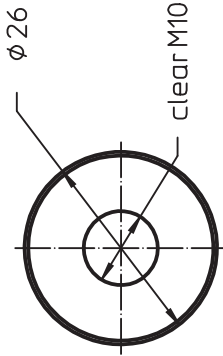
Bush (pb) 2 off

25t gear 2 off
20ps, 1.25mod



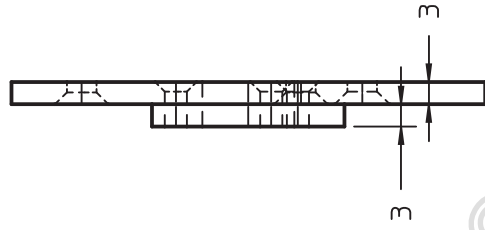


RIGHT-C

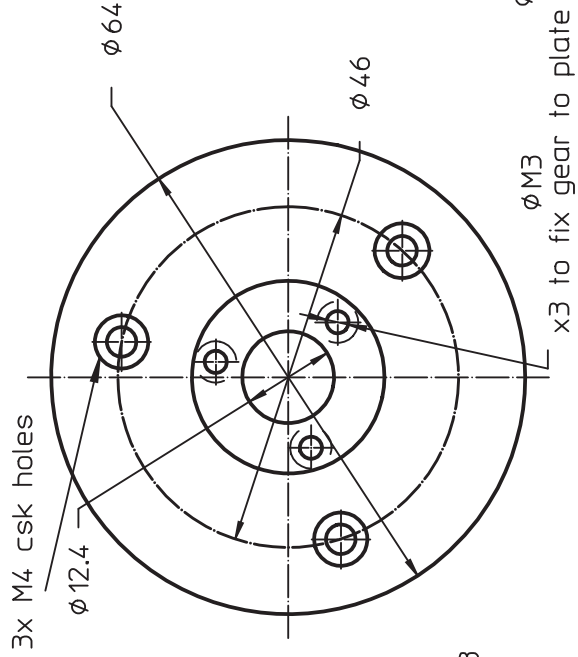


FRONT-C

Back Washer

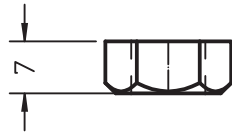


RIGHT-G



FRONT-P

Pulley Gear Plate

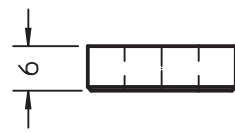


RIGHT-D

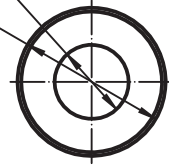


FRONT-K

Nut



RIGHT-E



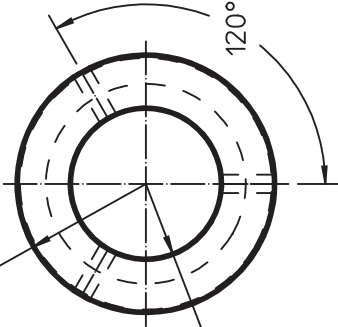
FRONT-L

Front Washer



ISOA

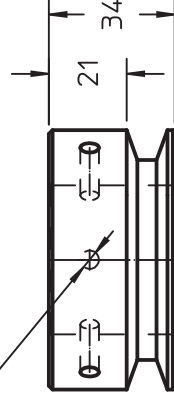
SCALE 1:2



FRONT-N

SCALE 1:2

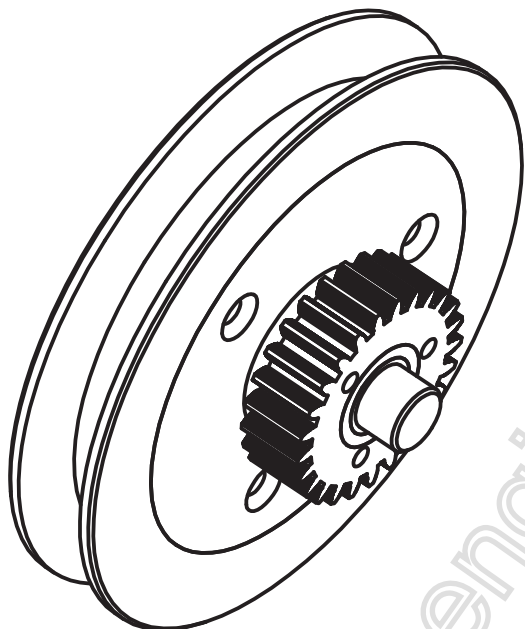
ϕ M5
x 3 at 120°



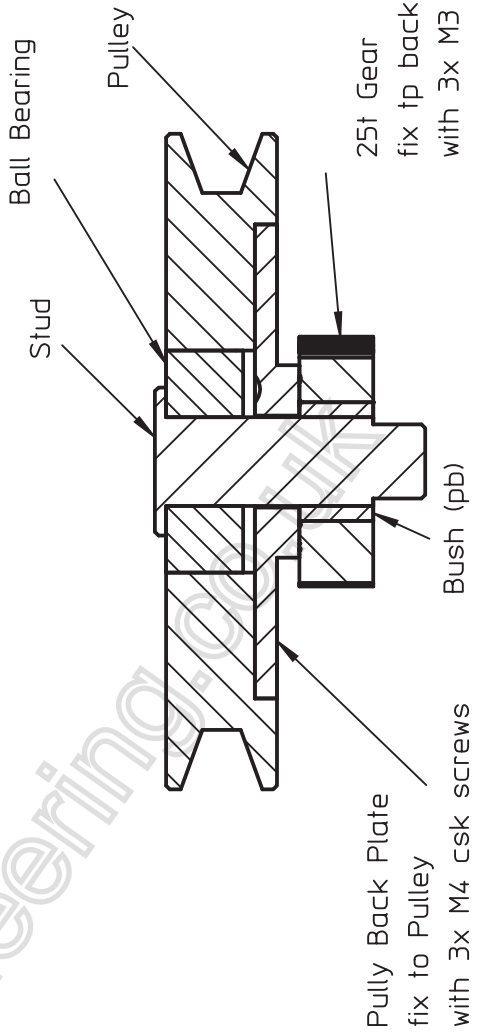
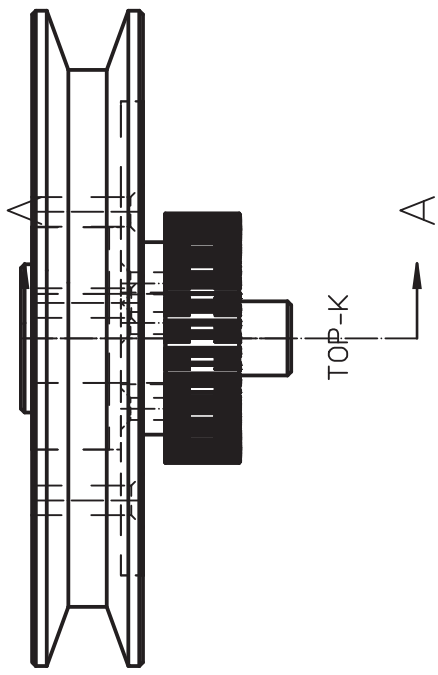
TOP-B

SCALE 1:2

Spindle Pulley

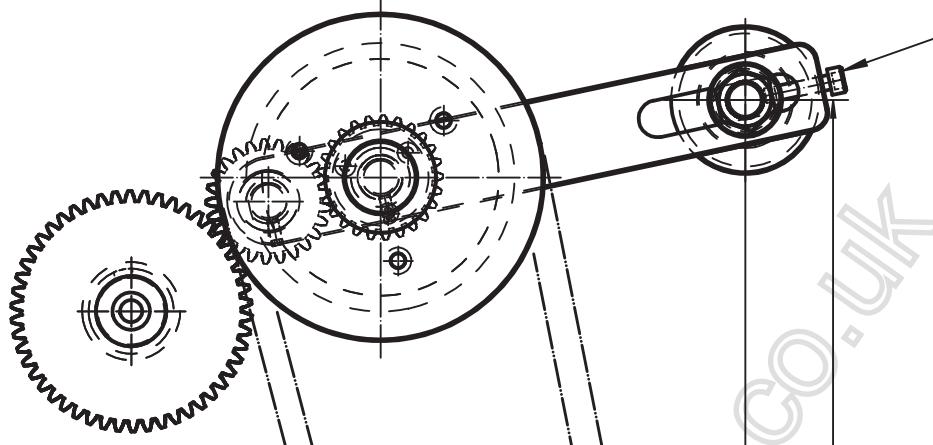


ISOC



SECTION A-A

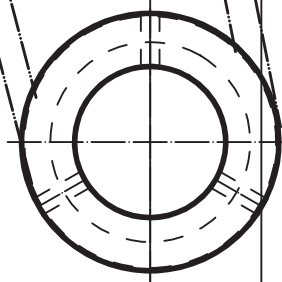
Gearbox input gear



screw to retain
meshing precision

Spindle pulley

'z' v belt to fit
note belt does not
need to be tight



30

320

FRONT-0
SCALE 1:2

Approximate location from
lathe spindle
(check actual dimensionson
on assembly)